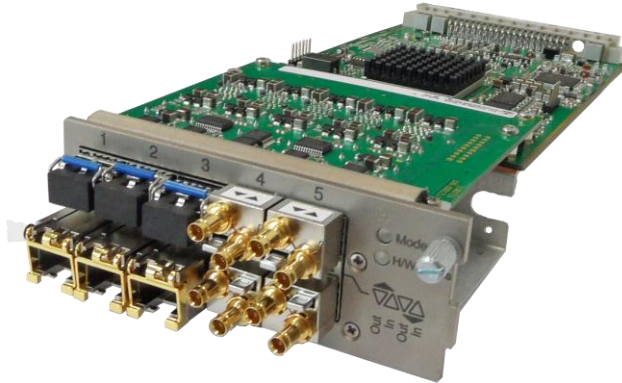


BOARD PLUG-IN EK-GTW/10 “ Multi-Conversion Gateway ”



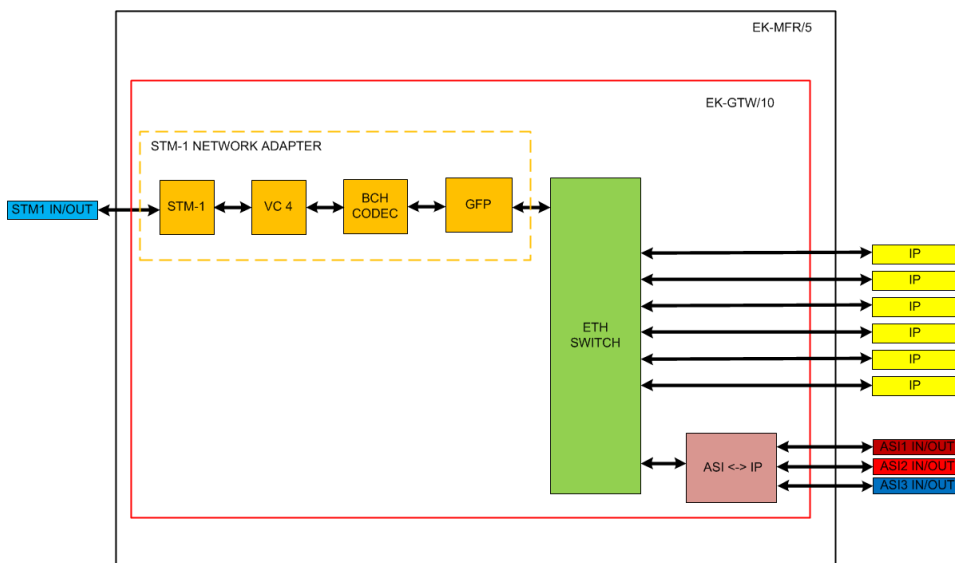
The new EK-GTW/10 card allows the transport of Ethernet and ASI signals in an STM-1 channel, with the configurable Ethernet switch optimal traffic management on all ports is obtained.

The ASI-IP network adapter allows the traffic of ASI signals in Ethernet.

All ports are SFP cage that allow the user the choice of a wide range of physical interfaces.

The card is a part of ALL4DIGIT Eurotek family that can be inserted within the various Mainframe solutions.

Block Scheme



Features

- STM1 B1,B2,B3 BER readout & J1 text management
- 6 Ethernet ports
- 3 ASI ports
- SFP connections
- BCH FEC on VC-4 container for Video broadcast quality services
- Integrated Ethernet L2 switch
- Ethernet Statistics
- High performance Ethernet Switch :
 - VLAN Port based
 - QoS PCP/DSCP/Eth Typ
 - RSTP
 - Dynamic and Static MAC Table
 - IEEE 1588v2

Applications

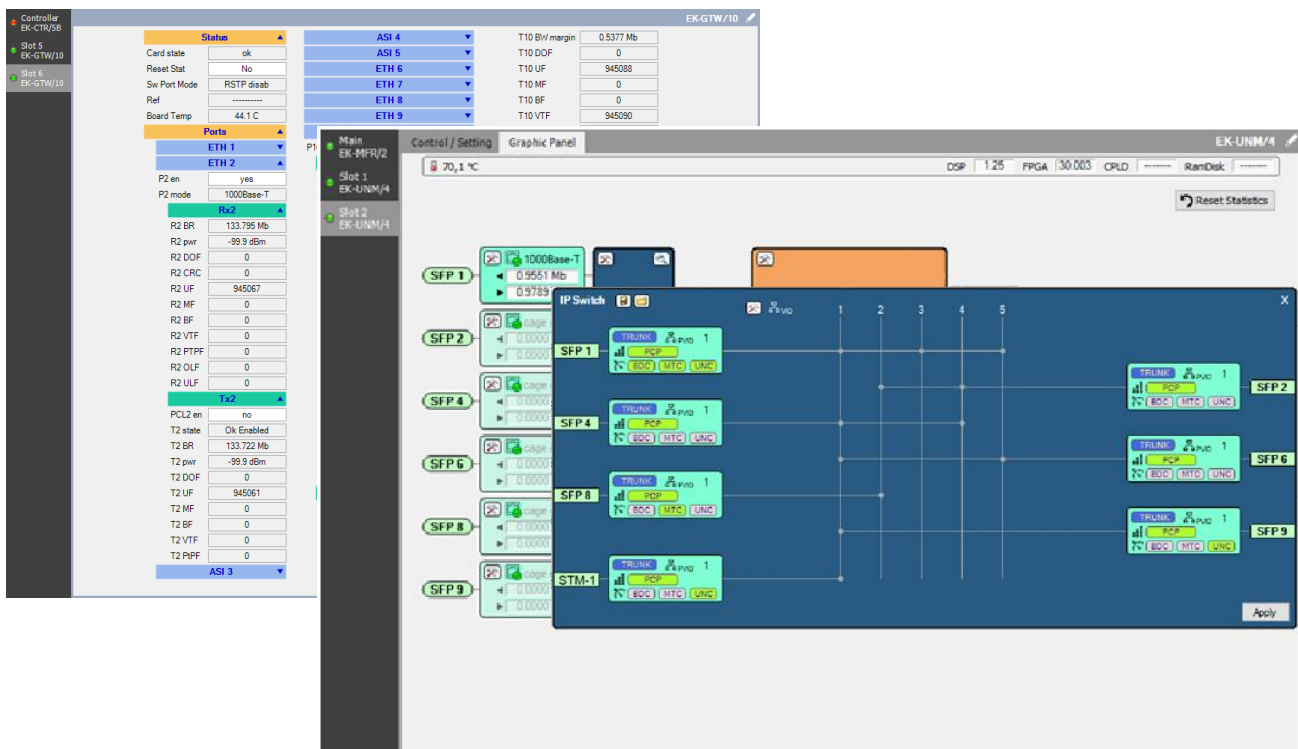
- Simultaneous ASI+Ethernet payloads over STM-1 pipes



TECHNICAL SPECIFICATION

COMMON SPECIFICATIONS	
INPUTS/OUTPUTS	ASI (ISO/IEC 13818-1, EN 50083-9:2002)
	STM-1 (Electrical & Optical)
	Gbe (IEEE 802.3-2002 and IEEE 802.3ab)
Ethernet Speed	10 Base-T, 100 Base-T, GbE
Ethernet MTU Max	9000 Byte
Ethernet Mode	Autonegotiation, crossing
Ethernet Reference	IEEE 802.3-2002 and IEEE 802.3ab
Ethernet Encapsulation	Generic Frame Procedure
ASI Encapsulation	Layer 3 ,UDP/RTP 1-7 packets or Layer 2
STM-1 Encapsulation	VC-4
FEC	BCH 261,16
Payload	134.6 Mb/s @ Layer 2
Errors Readout	B1, B2, B3, BCH (Instantaneous, 15 Min and 24Hours)
CLIMATIC CONDITIONS	
Temperature	-5°C ÷ + 70°C @ card level
Humidity	Max. 90%
Altitude	3000m 66kPa

Gui Interface



The graphical configuration interface of the Ethernet switch part allows the management of IP flows with a principle similar to video matrix, this allows a simplification in configuration and management of the part of networking.

This simplified interface allows setting the integrated Ethernet switch to users who are not particularly experienced in IP routing.