

PROFESSIONAL MULTI-CHANNEL HD/SD MPEG2 & H264 ENCODERS/DECODERS PLATFORM



ALL4DIGIT
SYSTEM

DVB
Digital Video
Broadcasting



HIGHLIGHTS

- Broadcast HD/SD MPEG2 and /or H264 Encoder / Decoder for any professional applications.
- One to Six different simultaneously A/V In/Out to Encode and Decode also in different formats: SDI with audio emb. AES-EBU, Analogue CVBS (PAL/NTSC)
- Build-in MUX/REMUX for multi-out cascading with complete SI Table management: PAT,NIT,PMT,LCN
- One Stereo pair for each video channel
- One ASI Transport stream cascading input with PID Filter function
- One ASI TS Multiplexed Output
- Complete free Software Suite to manage the system in local and remote site

Il sistema è basato sull'utilizzo di una unità centrale chiamata "Mainframe" che, grazie al sistema operativo Linux integrato, permette la condivisione e gestione di più schede inserite al suo interno. L'unità centrale fornita in un rack 19" 1 U supporta da uno a sei schede e può gestire contemporaneamente codifica e /o decodifica anche di formati differenti: SDI, Analogico, HD/SD, AES-EBU. Ogni scheda Encoder / Decoder (vedere tabella dei modelli disponibili), è dotata di un Mux che consente la realizzazione di un segnale ASI completamente gestibile nelle sue impostazioni (PAT,NIT,PMT,LCN,etc..), inoltre tramite il software di gestione fornito gratuitamente, è possibile impostare e monitorare tutto il sistema di encoding/decoding sia localmente che in maniera remota.

APPLICATIONS

- Digital TV Terrestrial Broadcasting
- Digital TV Satellite Up-link
- DSNB Mobile news gathering
- Digital Microwave Radio Links (Backbone, STL, TSL)

The system is based on the use of a central unit called "Mainframe" which, thanks to the Linux operating system, allows the sharing and management of most boards inserted inside it. The central unit supplied in a rack 19" 1 U supports from one to six boards and can handle both encoding and / or decoding of different formats including: SDI, Analog, HD / SD, AES-EBU. Each board encoder / decoder (see table of models available) is equipped with a Mux that allows the execution of a signal ASI completely manageable in its settings (PAT, NIT, PMT, LCN, etc. ..) also through the management software supplied free of charge, it is possible to set and to monitor all the system of encoding / decoding both locally and remotely.

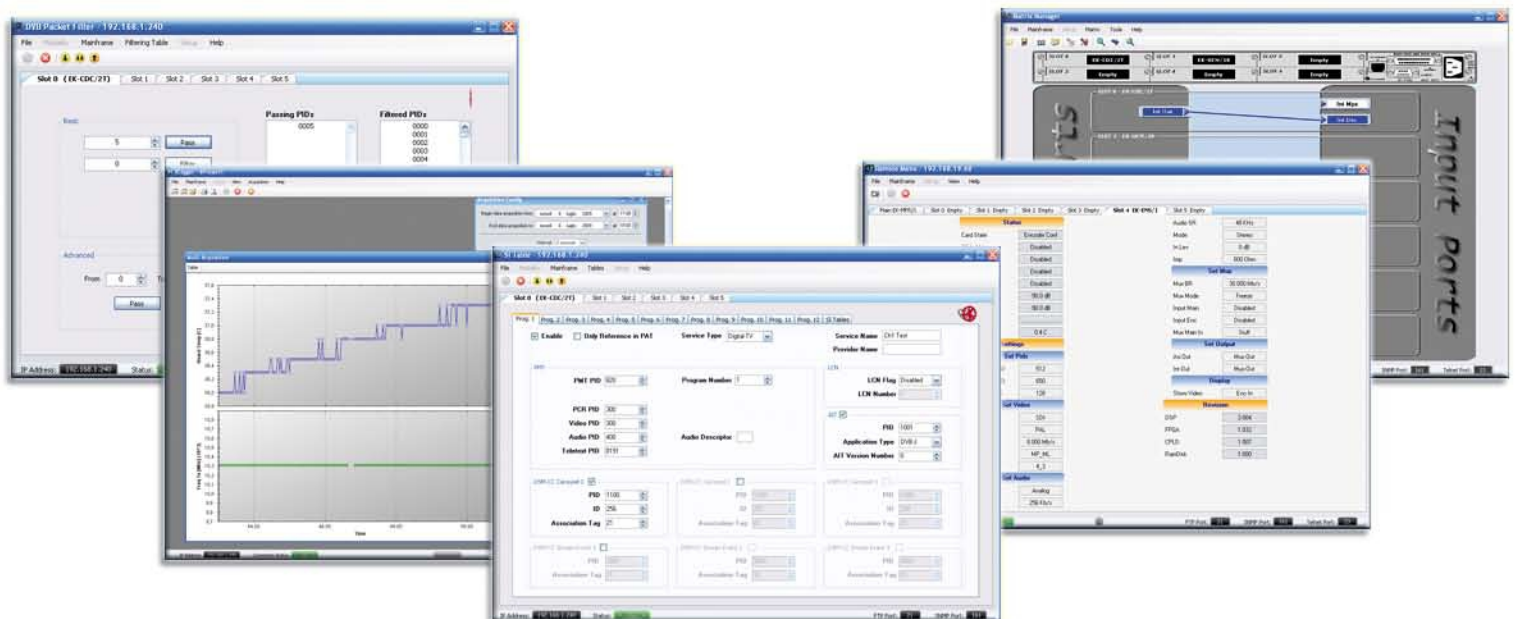
CONFIGURATION TABLE

MODEL FUNCTION	EK-CDC/2T	EK-DCD/2	EK-ENS/1	EK-DCS/1	EK-ENS/2	EK-DCD/3	EK-ENR/1*	EK-DCA/1*	EK-EDH/1	EK-ENL/1	EK-DCL/1
PAL/NTSC VIDEO	✓	✓	✓	✓	✓	✓	✓	✓	✓		
VIDEO ENCODER	✓		✓		✓		✓		✓		
VIDEO DECODER	✓	✓		✓		✓		✓	✓		
SDI 270Mb/s	✓	✓	✓	✓	✓	✓	✓	✓	✓		
AUDIO ENCODER	✓		✓		✓		✓		✓	✓	
AUDIO DECODER	✓			✓		✓		✓	✓		✓
ANALOG AUDIO	✓	✓	✓	✓	✓	✓	✓	✓	✓	✓	✓
DIGITAL AUDIO	✓	✓	✓	✓	✓	✓	✓	✓	✓	✓	✓
EMB. AUDIO			✓	✓	✓	✓	✓	✓	✓		
MP@ML	✓	✓	✓	✓	✓	✓	✓	✓	✓		
422P@ML			✓	✓							
SD	✓	✓	✓	✓	✓	✓	✓	✓	✓		
HD (H264)							✓	✓	✓		
SDI 1.5Gb/s							✓	✓	✓		
TXT	✓	✓									

*It is available the version with double HD Encoder (EK-ENR/2) or double HD Decoder (EK-DCA/2).

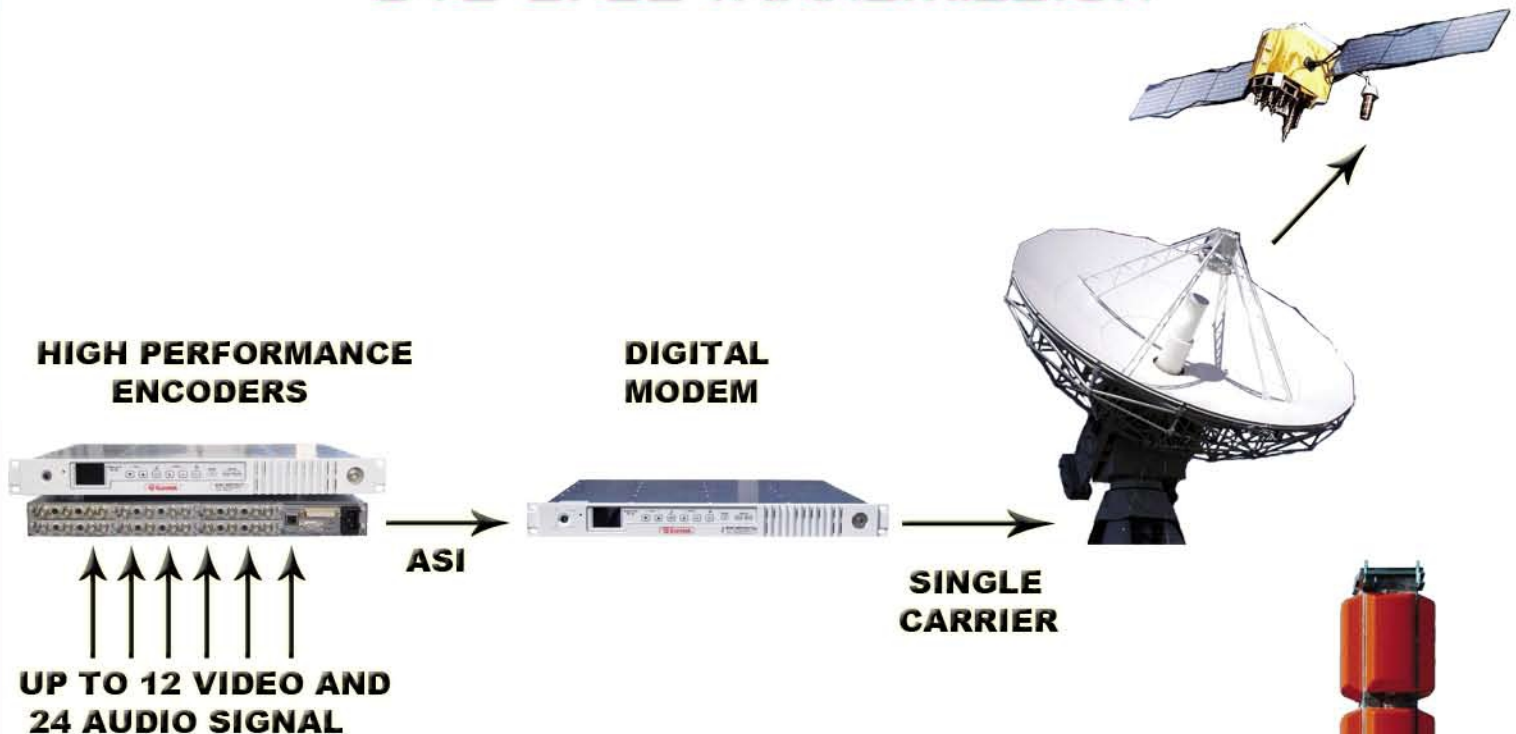
Technical features are showed inside the leaflet of each board.

EUROTEK SOFTWARE SUITE



TYPICAL APPLICATIONS

DVB-S/S2 TRANSMISSION



DVB-T/T2 TRANSMISSION



POINT TO POINT DIGITAL RADIO LINK

